

# EXPERIMENTAL ARCHAEOLOGY



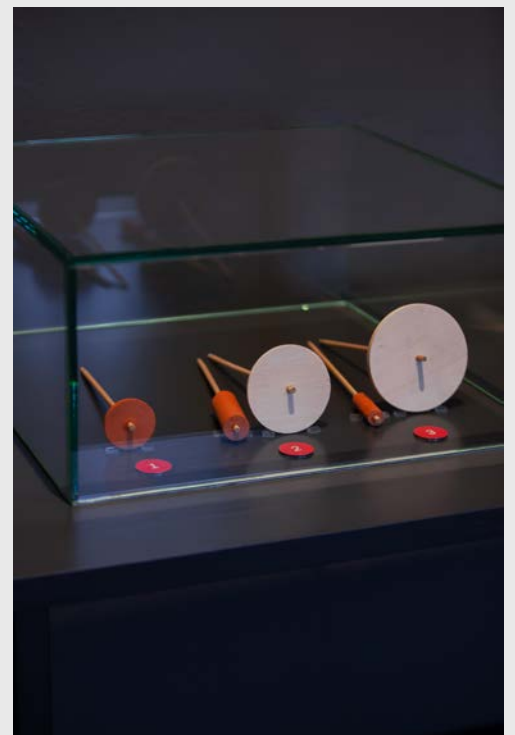
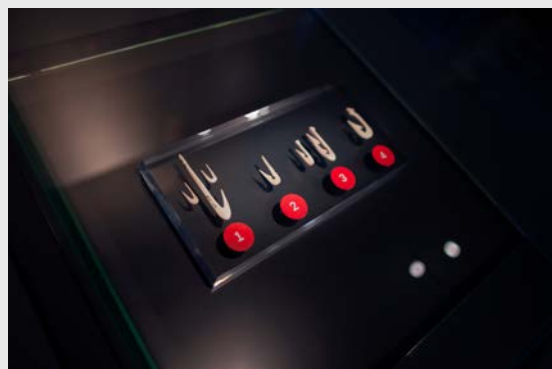
**MAMUZ**

SCHLOSS ASPARN/ZAYA

An exhibition by MAMUZ  
in cooperation with

**EXARC**.net

# EXPERIMENTAL ARCHAEOLOGY



# EXPERIMENTAL ARCHAEOLOGY

## SIZE

\_ Exhibition space required:  
150–300 m<sup>2</sup>

## AVAILABLE

\_ from December 2021 on

## 25 EXPERIMENTS

### BY 46 ARCHAEOLOGISTS

### FROM 11 NATIONS

The exhibition presents 25 exciting and innovative experiments conducted by 46 archaeologists from across the globe that have provided revealing insights into the living environments of the ancient world.

The exhibition first introduces experimental archaeology as a research method and then presents a broad spectrum of experiments and areas of application.

Archaeology is largely concerned with periods from which neither written nor pictorial sources have survived. Traditional archaeological methods are often insufficient for understanding the way in which archaeological finds, such as tools and structures, were made and used. Only scientific experiments can answer specific questions about the technical possibilities, work processes and craftsmanship of our ancestors.

But in order to successfully carry out an experiment it is vital to have a mastery of the tools and materials. Experimental archaeologists therefore require not just historical knowledge, but also practical know-how and excellent manual skills.

The exhibition shows experiments in areas such as ceramic production, wood technology, bronze casting, glass bead making, textile handicrafts, bone working and metallurgy. Experiments help understand the processes connected to various activities, such as preparing roast pork 8,000 years ago or create comparative data, like on how people might have lived in a Viking house.

The exhibition was organised by MAMUZ in cooperation with EXARC, a global network of archaeological open-air museums and experimental archaeologists.

## OVERVIEW OF THE CONTENTS ON DISPLAY:

Introduction / Franz Pieler

### EXPERIMENTAL ARCHAEOLOGY

Introduction / Matilda Siebrecht / Roeland Paardekooper

### THE MANY FACES OF EXPERIMENTAL ARCHAEOLOGY

**1** Sue Heaser

### EARLY MEDIEVAL GLASS BEADMAKING

**2** Danica Staššiková-Štukovská

### GLASS MELTING EXPERIMENTS IN THE ARCHEOPARK IN HANUŠOVCE NAD TOPĽOU

# EXPERIMENTAL ARCHAEOLOGY

3 Jannie Marie Christensen

## **MAN AND HOUSE**

4 Frances Houston

## **LET'S GET WEAVING!**

5 Katrin Kania / Heather Hopkins Pepper

## **MEDDLING METALS?**

6 Katrin Kania

## **WHAT MAKES THE YARN?**

7 Thomas Rose / Yarden Pagelson / Yuval Goren

## **RECONSTRUCTING THE METALLURGY OF THE CHALCOLITHIC SOUTHERN LEVANT (4200–3800 BCE)**

8 Lukas J. Kerbler

## **BLOOMERY FURNACE**

9 Michael Konrad

## **A MATTER OF FORM?**

10 Johannes Auenmüller / Georges Verly / Frederik W. Rademakers / Florian Téreygeol

## **CASTING CAT HEADS**

11 Nicholas Groat / Lenore Thompson

## **CERAMICS AND SMELTING**

12 Anna Kaiser / Boris Dreyer

## **DANUVINA ALACRIS**

13 Beate Maria Pomberger

## **HOW WERE GUT STRINGS PRODUCED IN PREHISTORY?**

14 Wolfgang F. A. Lobisser

## **WOOD TECHNOLOGY OF THE EARLY NEOLITHIC PERIOD**

15 Duncan Keenan-Jones

## **HERO'S AUTOMATA AND DIGITAL EXPERIMENTAL ARCHAEOLOGY**

# EXPERIMENTAL ARCHAEOLOGY

**16** Anja Mansrud

**HOOKED!**

**17** Magyar Történelmi Íjász Társaság, Gábor Szabó, Zengő Nyíl

**BRONZE-HEADED ARROWS AGAINST THE IRON GATE**

**18** Grzegorz Osipowicz

**BIRCH TAR PRODUCTION IN PALAEO-LITHIC AND MESOLITHIC**

**19** Barbara Horejs / Michael Brandl / Irene Petschko / David Blattner

**THE PATH TO MAKE A PIG ROAST 8000 YEARS AGO**

**20** Hans Reschreiter / Wulf Hein / Fiona Poppenwimmer / Rolf Palm / Frank Findeiß / Heather Leach / Christine van der Stege

**BENDING AND BREAKING**

**21** Hans Reschreiter / Fiona Poppenwimmer / Daniel Brandner / Max Grabner / Frank Trommer

**HOW MUCH COPPER AND TIN FOR SALT?**

**22** Franz Pieler / Karina Grömer / Michael Konrad / Michaela Fritzl

**LONG TERM EXPERIMENT: MIDDLE BRONZE AGE TUMULUS**

**23** Michaela Fritzl

**RITUAL MATTERS**

**24** Kirsten Mandl / Martin Grassberger

**AS RED AS BLOOD**

**25** Fritz Ugrinovits

**RED AND BLACK**

# EXPERIMENTAL ARCHAEOLOGY

## DIMENSIONS

- \_ table  
(width x height x depth)
- \_ showcase  
(width x height x depth)
- \_ back wall  
(width x height)

## STORAGE OF THE PACKAGING MATERIAL

7 boxes (height 70–150 cm,  
floor space 85 m<sup>2</sup> – if you  
don't stack it + packing  
material)

## INTRO

- \_ 2 standalone-screens – exhibition intro  
(visible surface: 730\*500; in front: 710\*970, side: 435\*1150 back/diagonally, back: 1150\*710)
- \_ Inscription (Intro + Imprint 3200\*900)

## SCREENS IN THE EXHIBITION

- \_ 4 video screens built into a wooden frame also holding an explanatory panel about the contents – montage on the wall (1400\*900) – one video per experiment
- \_ 1 standalone screen in the exhibition (85 high, Screen 660\*440) – Experiment 15

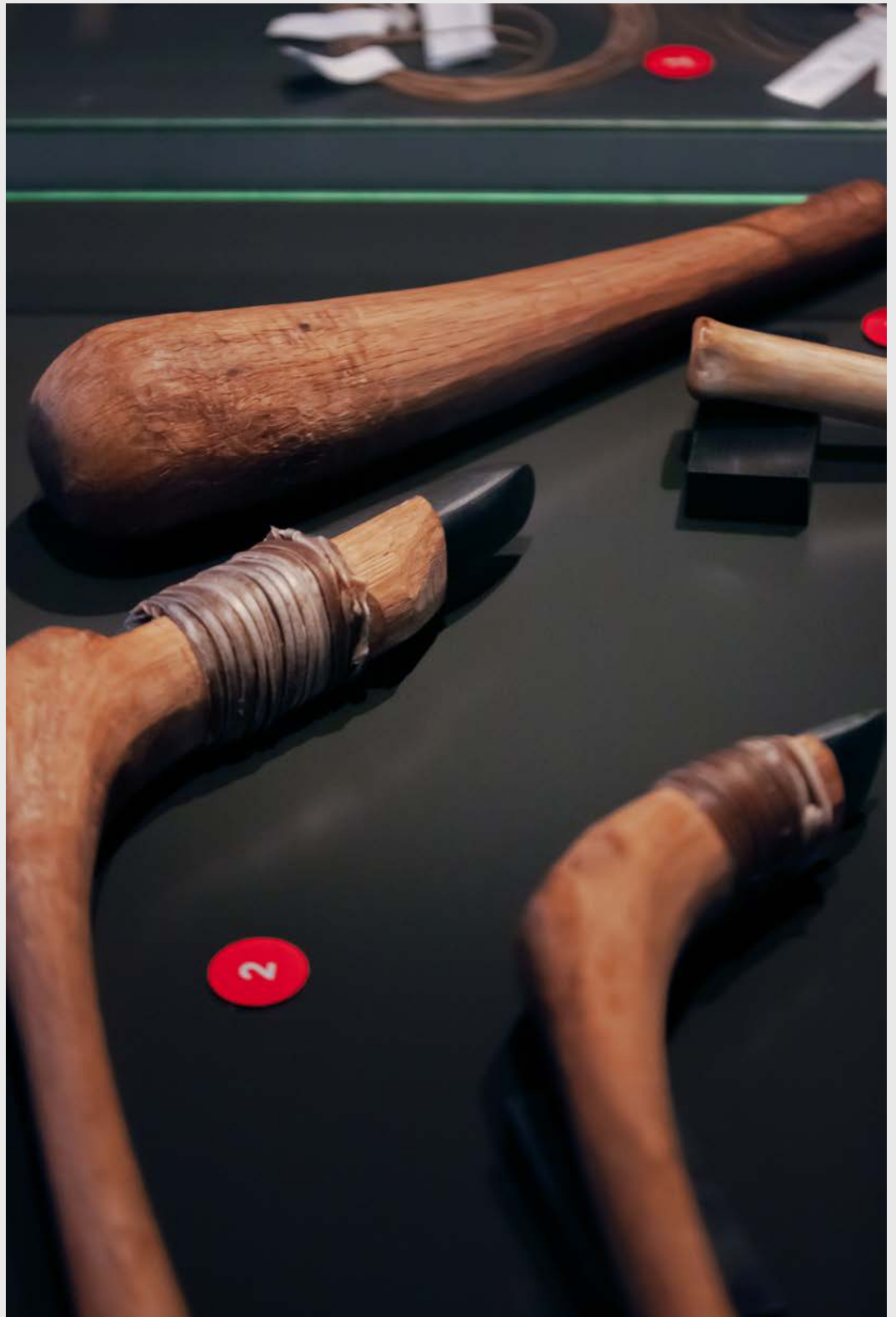
## TABLES WITH SHOWCASE AND BACK WALL

- \_ **Experiment 1 + 2:** table (1800\*900), back wall (1810\*900), showcase 1: 900\*600\*200; showcase 2: 460\*410\*340
- \_ **Experiment 3:** T-frame made of metal (1700\*450), glasspanel enclosure (49\*109\*169 – two sides), description (420\*900 on the glass)
- \_ **Experiment 4 + 5 + 6:** table (2540\*600), back wall (2540\*900), showcase 4: 900\*600\*300; showcase 5: 400\*310; showcase 6: 450\*450\*200
- \_ **Experiment 7:** table (1400\*1000), back wall (1145\*900), showcase 7: 1300\*600\*250
- \_ **Experiment 8 + 9:** table (2540\*900), 2 back wall (1350\*900 + 1200\*900), showcase 8: 800\*600\*400; showcase 9: 800\*600\*400
- \_ **Experiment 10 + 11:** table (2000\*900), back wall (2000\*900), showcase 10: 800\*600\*400, showcase 11: 800\*600\*400
- \_ **Experiment 12:** table (1000\*1000), back wall (1000\*900), showcase 12: 650\*600\*400
- \_ **Experiment 13 + 14:** table (2540\*1100), 2 back walls (1000\*900 + 1000\*900), showcase 13: 1300\*600\*200; showcase 14: 1050\*600\*300
- \_ **Experiment 15:** Standalone-screen (see above), back wall (800\*900),
- \_ **Experiment 16:** table (1000\*800), back wall (800\*900), showcase 16: 500\*500\*200
- \_ **Experiment 17 + 18:** table (2250\*800), back wall (2250\*900), showcase 17: 1000\*650\*550; showcase 18: 850\*600\*150
- \_ **Experiment 19:** table (1200\*800), back wall (1200\*900), showcase 19: 1000\*200\*200
- \_ **Experiment 20 + 21:** table (1500\*1200), 2 back walls (600\*900 + 600\*900), showcase 20: 900\*600\*300, showcase 21: 900\*600\*300
- \_ **Experiment 22 + 23 + 24:** table (3150\*900), back wall (3140\* 00), showcase 22: 5550\*460\*400, showcase 23: 400\*400\*420, showcase 24: 650\*410\*340
- \_ **Experiment 25:** table (2500\*100), back wall (2500\*900), showcase 2: 1090\*600\*350, showcase 2: 1170\*550\*450

# EXPERIMENTAL ARCHAEOLOGY



# EXPERIMENTAL ARCHAEOLOGY





# EXPERIMENTAL ARCHAEOLOGY

After the closing of the season please send us: number of visitors, press clippings, press kit.

It should be noted that the following must be communicated in all marketing and press materials: **An exhibition by MAMUZ in collaboration with EXARC.**

Link Logos: <https://celum.noeku.at/pinaccess/showpin.do?pinCode=yIpITS2OuzIF>

## WE PROVIDE

\_ **Pictures of the exhibition:**

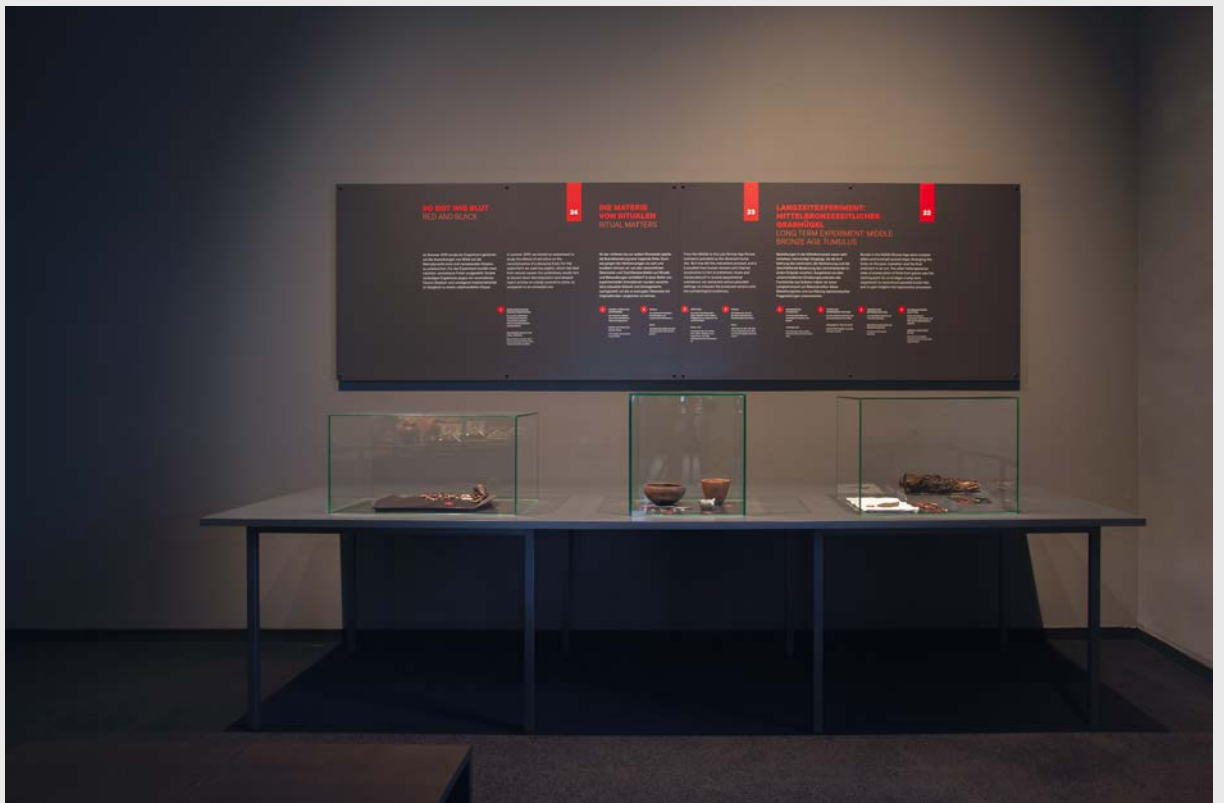
<https://celum.noeku.at/pinaccess/showpin.do?pinCode=DkCclalLh9RP>

\_ **Video of the exhibition:**

<https://celum.noeku.at/pinaccess/showpin.do?pinCode=H3tdbXyflTKO>

\_ **marketing materials / press kit:**

<https://celum.noeku.at/pinaccess/showpin.do?pinCode=iwxSyGRwua3I>



# EXPERIMENTAL ARCHAEOLOGY

Are you interested in the exhibition? We look forward to your message:

WMB Weinviertel Museum Betriebs GmbH

MAMUZ Schloss Asparn/Zaya

Schlossgasse 1

2151 Asparn/Zaya

+43 (0) 664 60499 281

renate.heger@mamuz.at

